

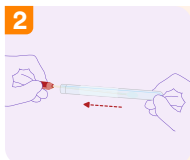
HPV TESTING SELF-COLLECT INSTRUCTIONS

Patient self-collect instructions:



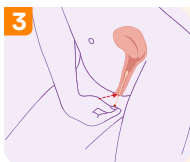
1

Before you collect your sample ensure you have clean hands. To avoid contamination, do not remove the swab from the container until you are ready to collect your sample and do not use any lubricant.



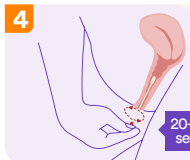
2

Once you are comfortable, remove the red cap and pull the swab out of the container.



3

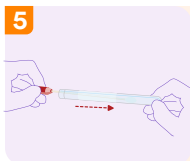
There is a red line halfway along the swab. Insert the front part of the swab inside your vagina aiming for this red line.



4

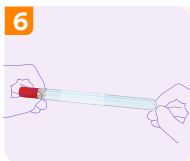
Once the swab is correctly inside your vagina, rotate it gently in a circular motion for 20-30 seconds.

20-30
secs



5

Remove the swab, place it back in the container and gently secure the cap.



6

Hand the container back to your Medical Practice immediately. If the collection is done at home please return the labelled container back to your Medical Practice immediately (*not pathology collection centre*).

Ask your healthcare provider for assistance if you are experiencing difficulties collecting the sample, or if you would like these instructions explained further.